

I = 7°30'
D = 3°20'
T = 112.66'
L = 225.00'
E = 1719.12
PI = 1+50

I = 9°30'
D = 3°20'
T = 142.85'
L = 285.00'
E = 1719.12
PI = 7+18.20

NOTES

SUPERSTRUCTURE: - Two end spans Wooden King Post Trusses. Three inch transverse plank, 12" squared timber stringers. Three post timber bents 12" x 12". All timber in poor condition.

SUBSTRUCTURE: - Abut #1 and Abut #2 split granite fairly well laid dry. Good condition. Timber bents on mud sills weighted down with stone rip rap.

STREAM: - Meandering stream thru interval. At high stages interval is flooded. Extreme high water Elev. 47.5 low water present stage.

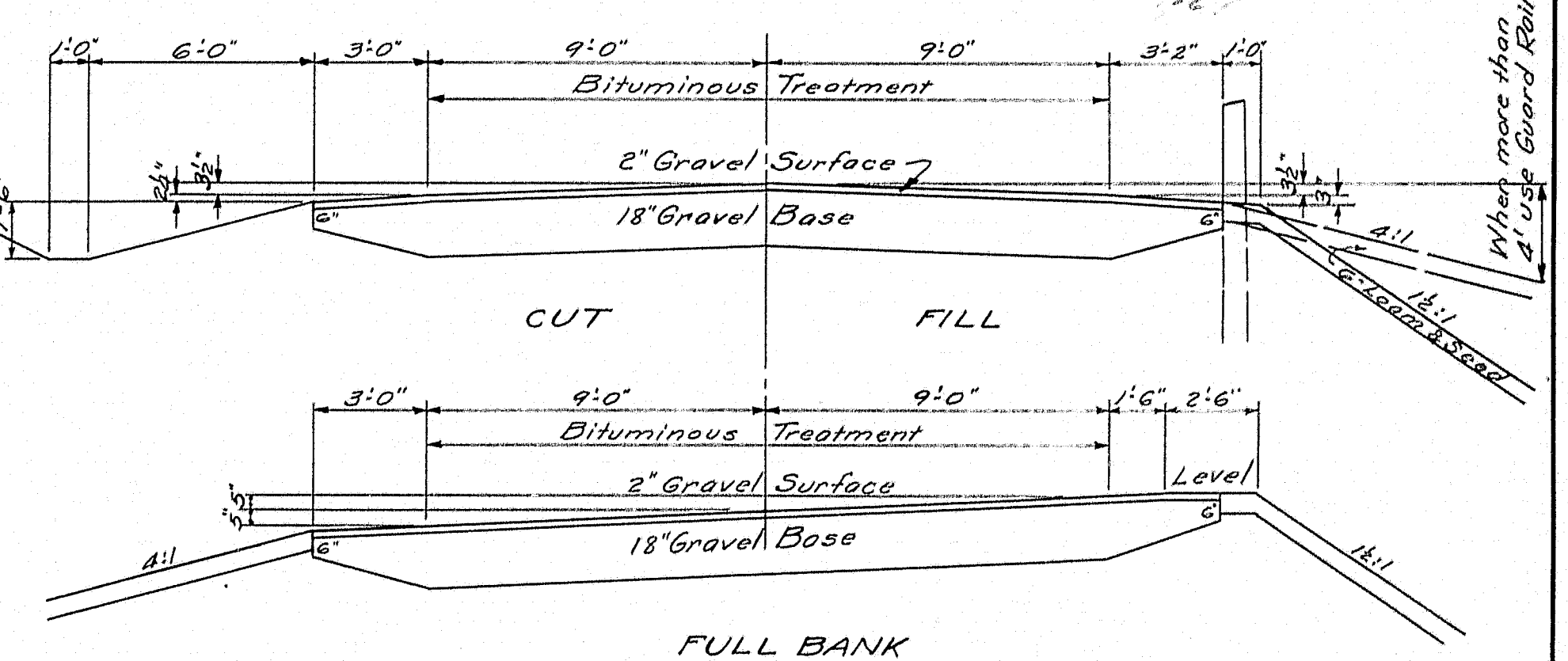
FOUNDATION: - Gravel and mud on surface. See soundings.

APPROACHES: - State aid gravel surface.

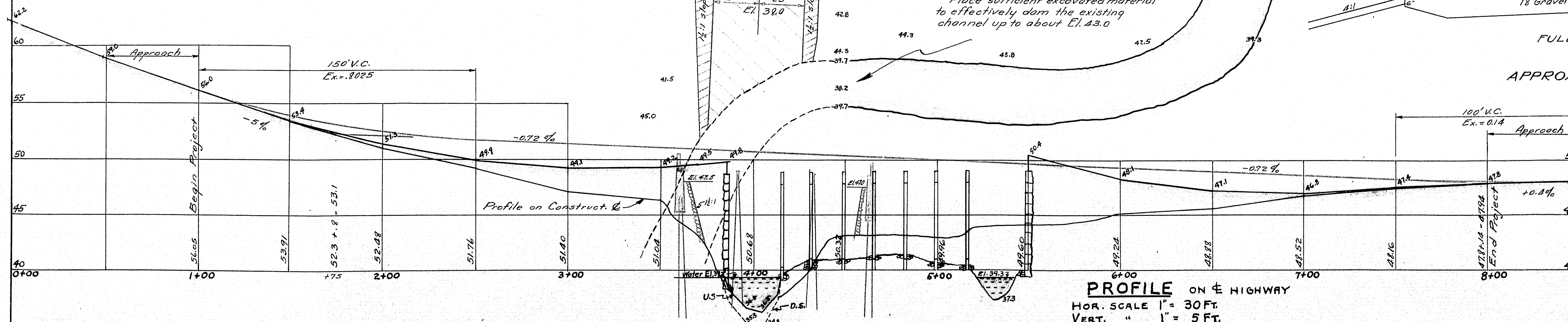
ROD SOUNDINGS	
Sounding #1	
Ground Elev. = 40.2	
0.0 to 2.5	by hand
2.5 to 6.0	1 1/2" per blow
6.0 to 9.0	1" " "
9.0 to 12.0	3/4" " "
12.0 to 15.0	3/4" " "
Thru sandy blue clay.	
Sounding #2	
Ground Elev. = 40.6	
0.0 to 3.5	by hand
3.5 to 9.0	1 1/2" per blow
9.0 to 12.5	3/4" " "
12.5 to 15.0	3/4" " "
Thru clay to hard packed fine sand	

Remove existing Abutment No. 1 to the plane of the slope in front of the proposed abutment. Payment to be at the contract unit price per cubic yard for structural earth excavation, Item No. 5.

PLAN
SCALE 1" = 30 Ft.

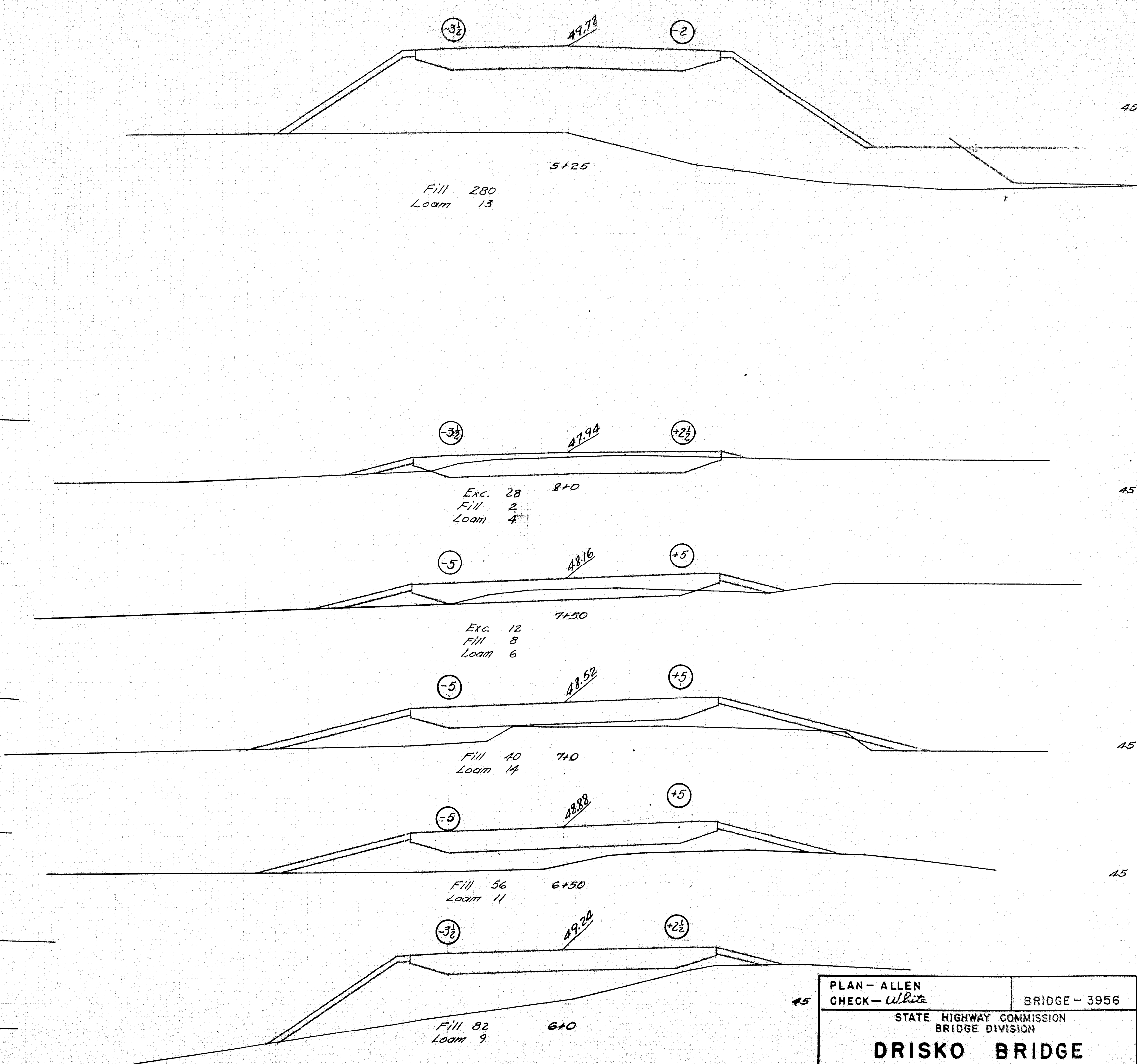
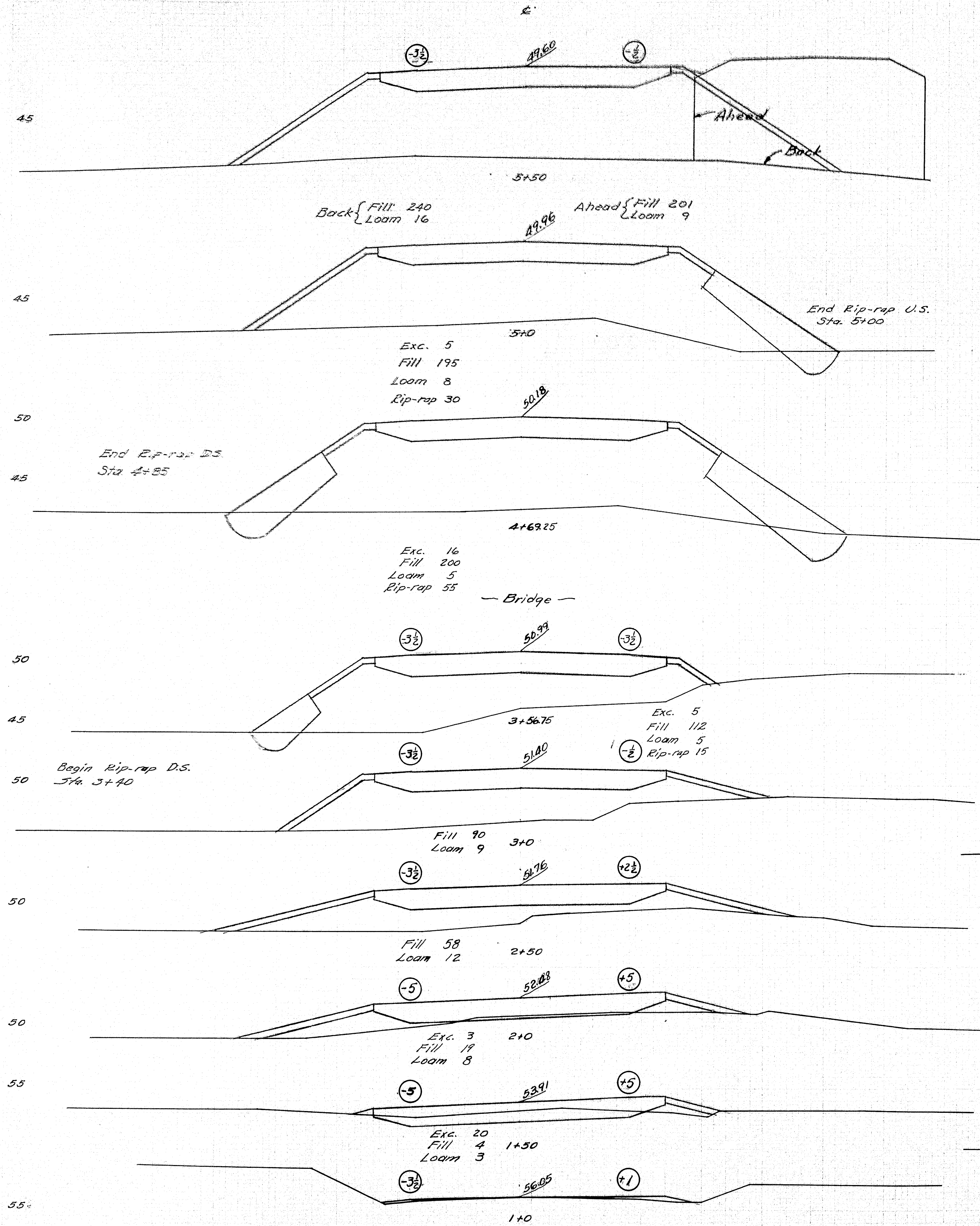


APPROACH SECTIONS



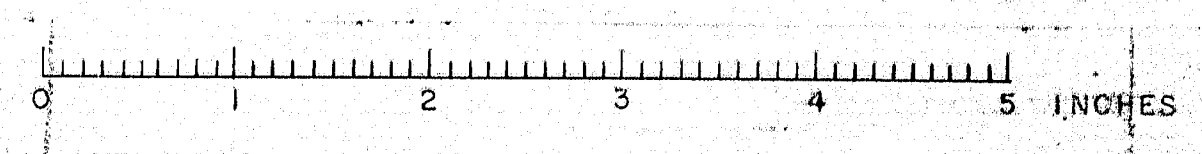
PROFILE ON E HIGHWAY
HOR. SCALE 1" = 30 Ft.
VERT. " 1" = 5 Ft.

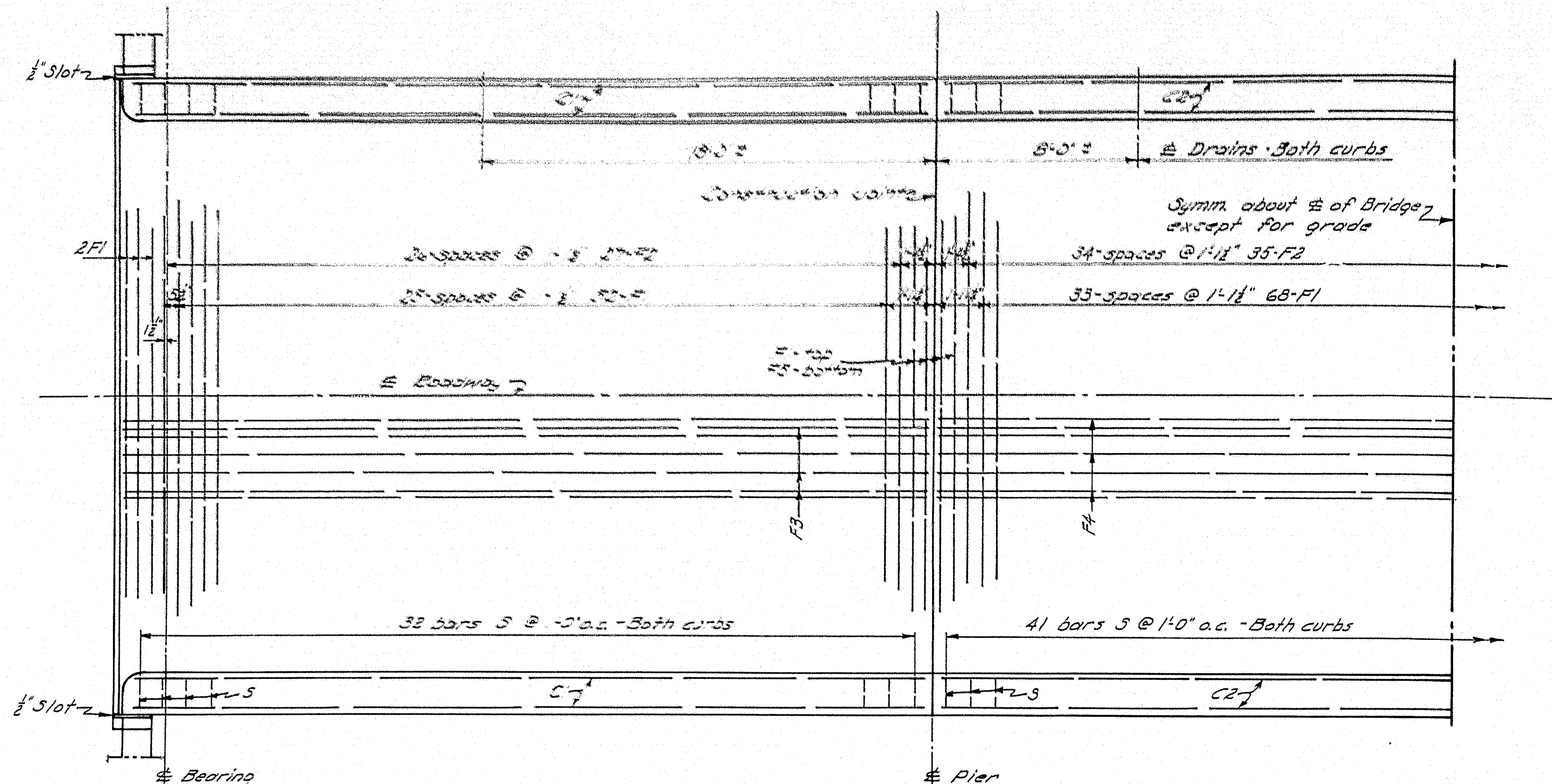
SURVEY - BLAKE	TOWN	15-27
PLOT 4 TRACED WELCH	BRIDGE	3956
STATE HIGHWAY COMMISSION		
BRIDGE DIVISION		
DRISKO BRIDGE		
OVER		
CHANDLER RIVER		
IN THE TOWN OF		
JONESBORO		
WASHINGTON COUNTY		
SURVEY PLAN		
SHEET / OF 4 AUGUSTA, ME. JUNE 1946		



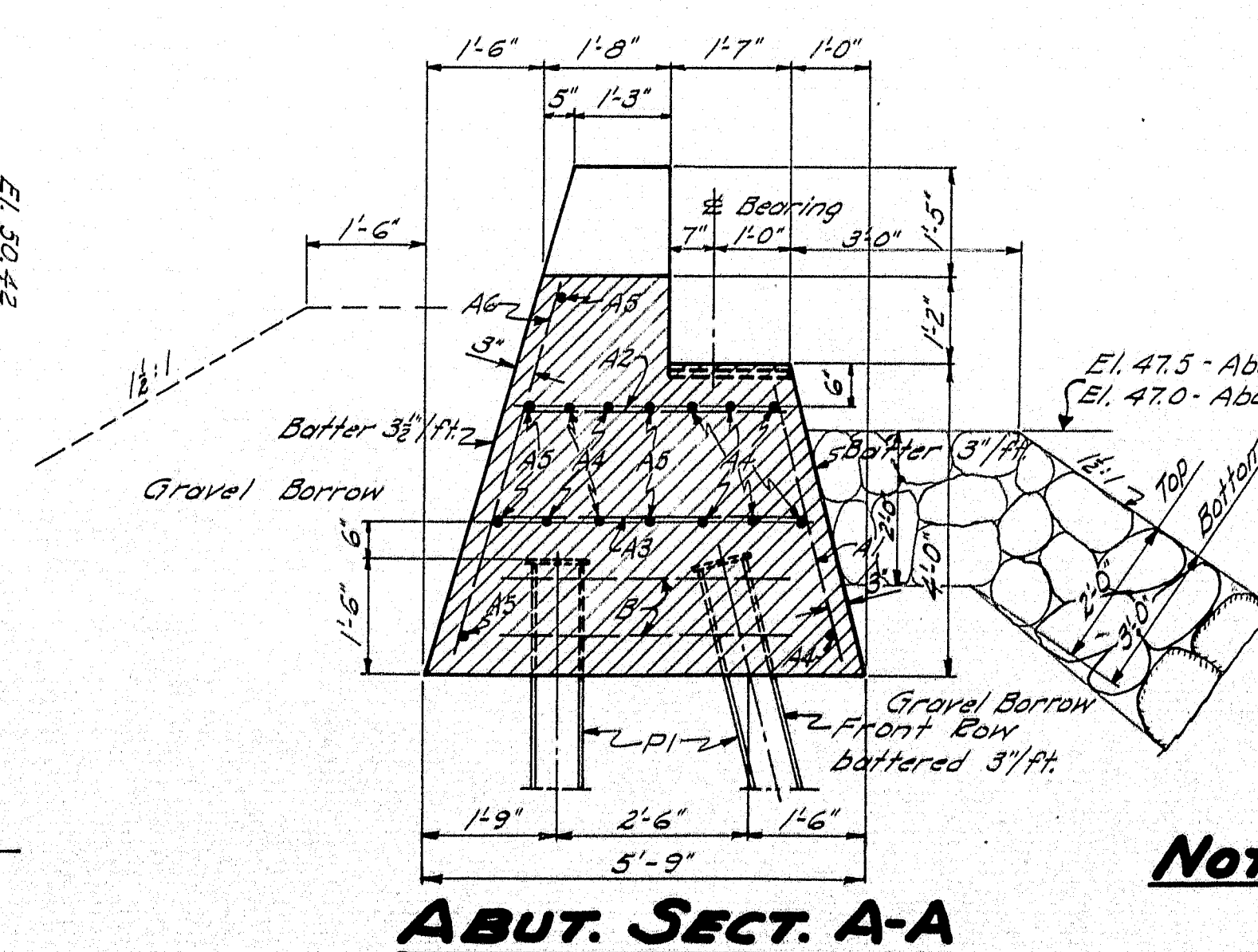
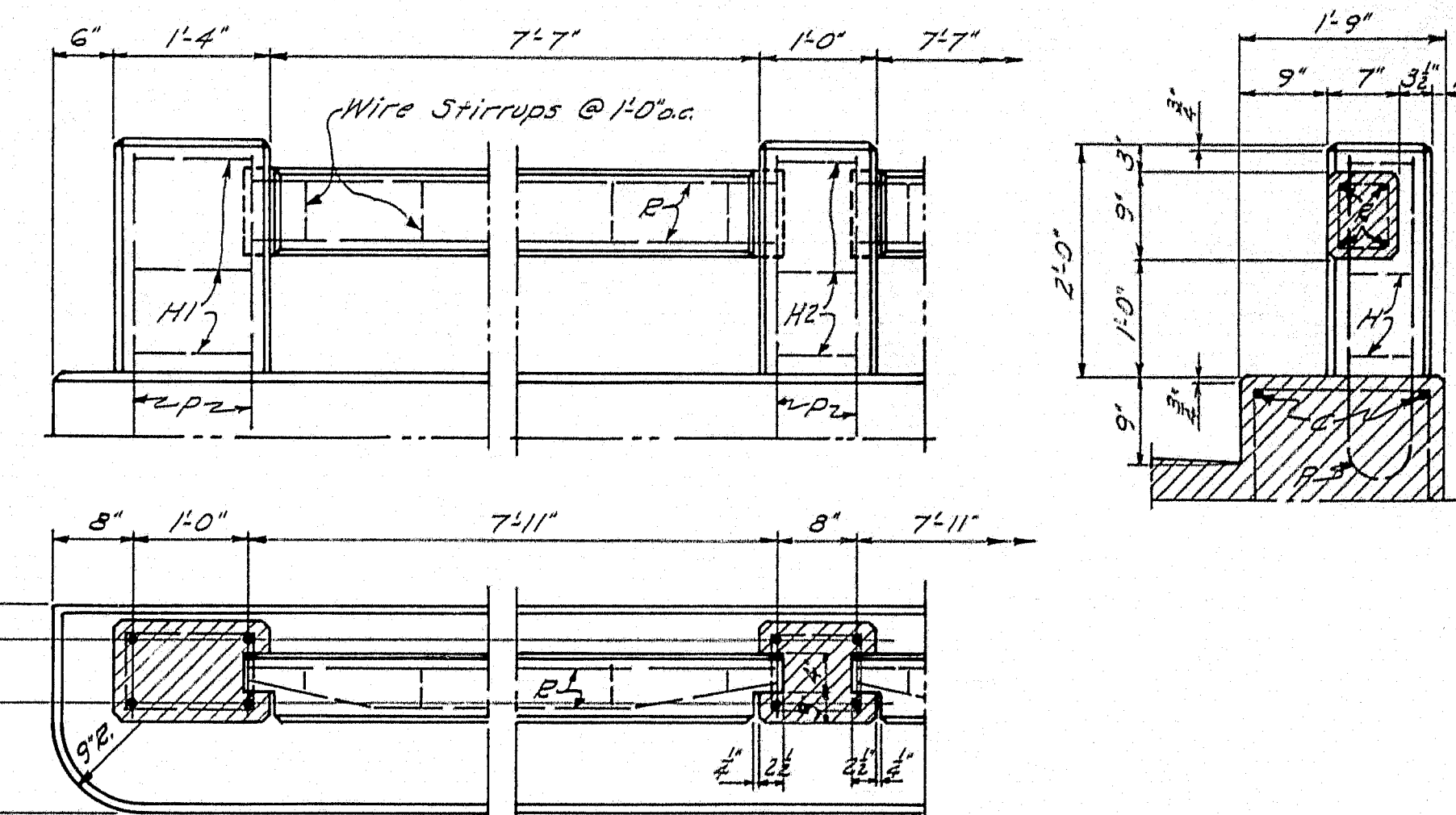
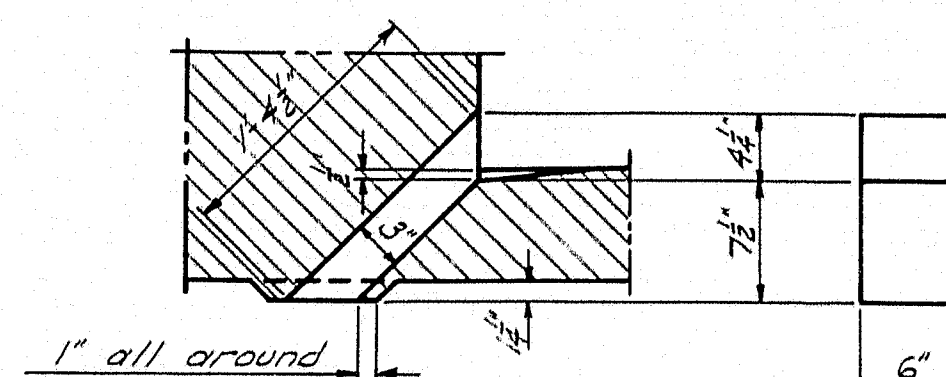
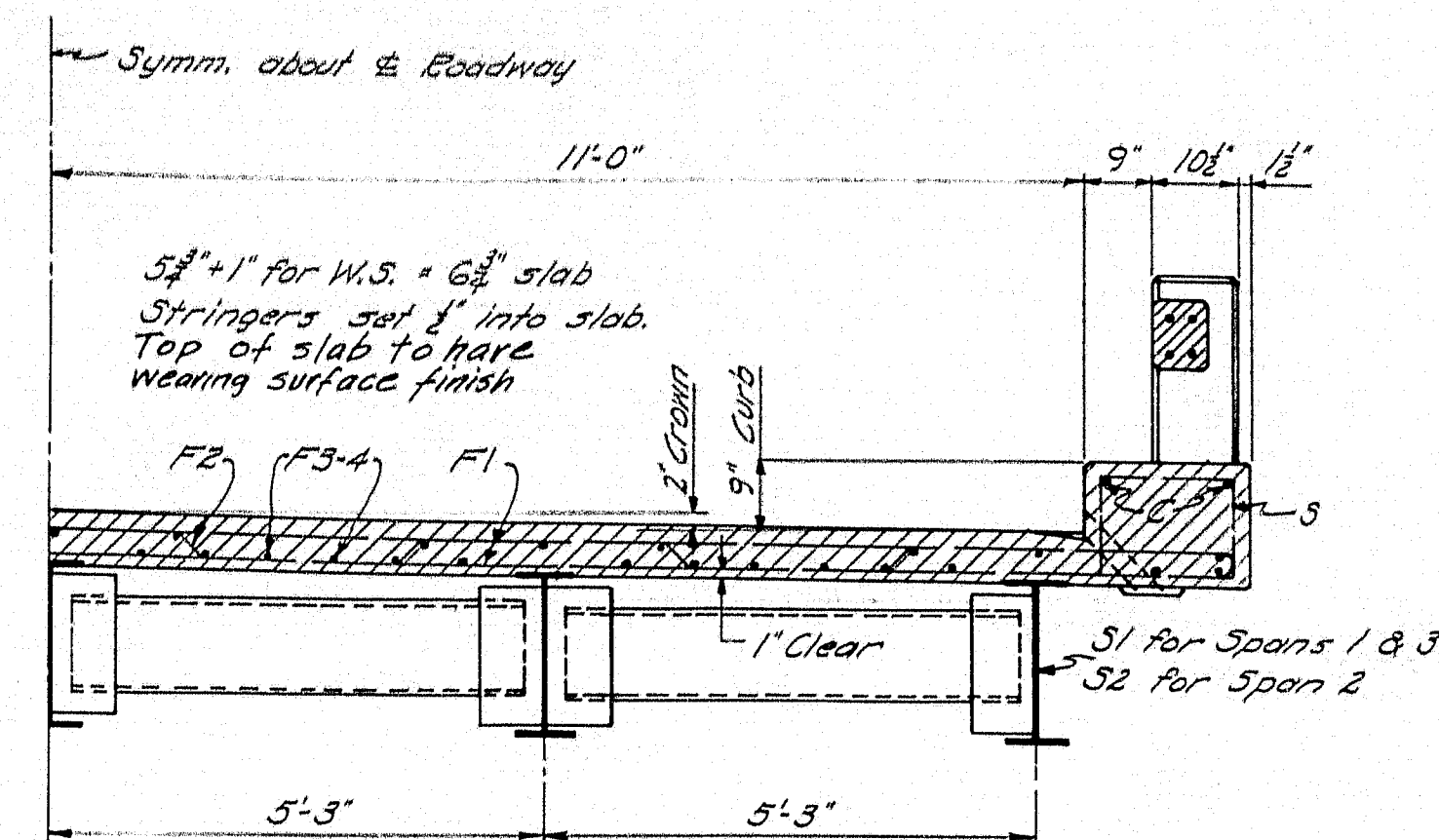
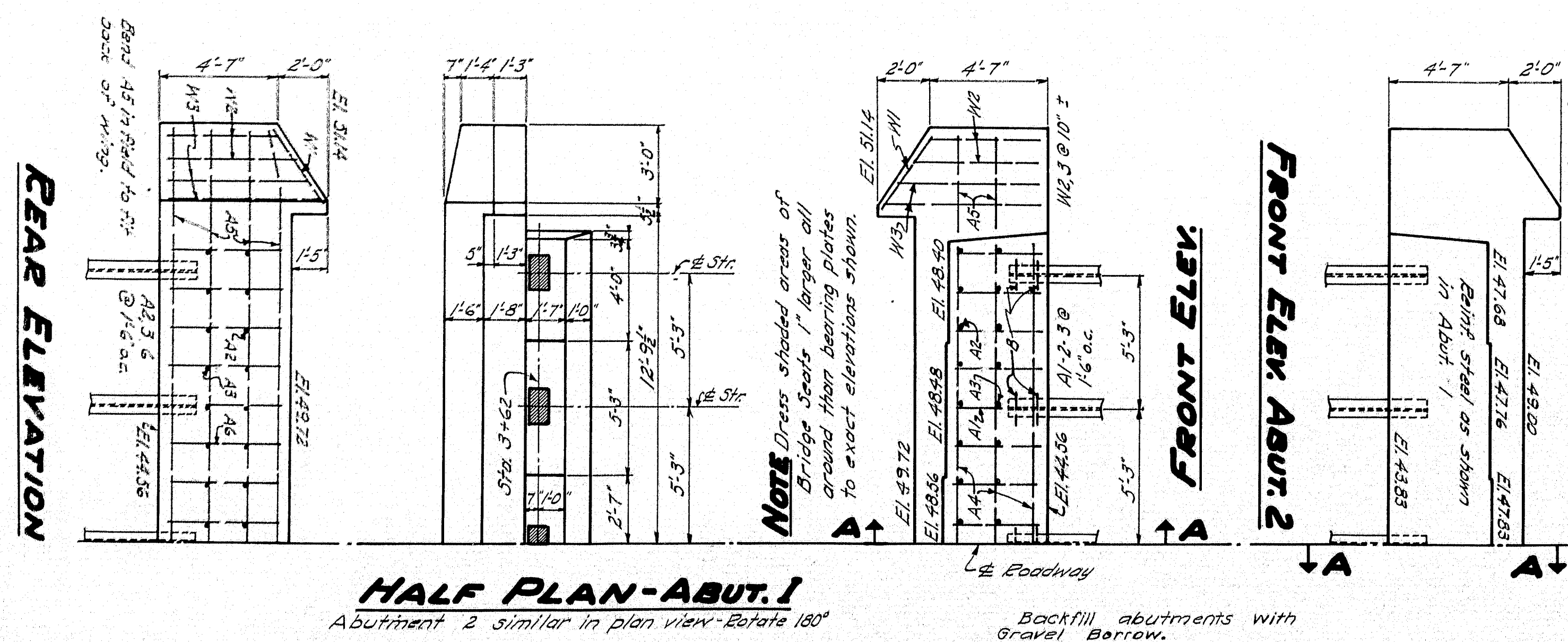
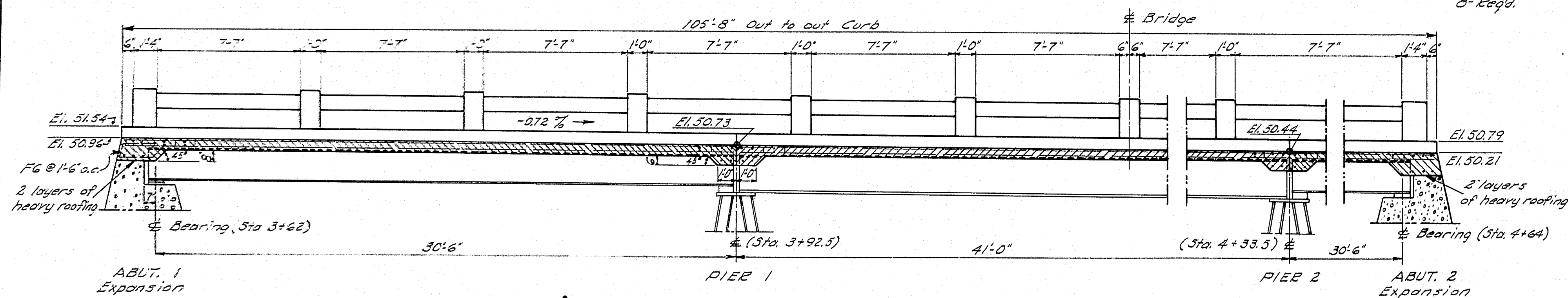
Do not excavate for base
wherever the existing material
is suitable.

PLAN - ALLEN	BRIDGE - 3956
CHECK - White	
STATE HIGHWAY COMMISSION BRIDGE DIVISION	
DRISKO BRIDGE	
OVER	
CHANDLER RIVER	
IN THE TOWN OF	
JONESBORO	
WASHINGTON COUNTY	
CROSS SECTIONS	
SHEET 2 OF 4 AUGUSTA, MAINE OCT. 1947	





Note Cover the $\frac{1}{2}$ " slot between the curb and parapet on the back side with two (2) layers of heavy roofing felt or. Coat the surface of the concrete and the back side of each layer as applied with a surface grade of roofing cement. The area to be covered is to be recessed $\frac{1}{2}$ " by nailing thin strips to the forms before concrete is placed.



Curb to be cast with slab, with the vertical post steel in position before concrete is placed. The rail bar to be precast and set in position so that the ends project into post forms 21 inches. Wrap the tongue end with two(2) layers of heavy roofing. Wire stirrups to be constructed in the field from a single strand of #9 annealed wire. In forming the stirrups make a complete turn around each bar E.

All exposed edges of concrete are to be chamfered 1/4 inch unless otherwise indicated.

DESIGN

Loading H-15-44
 $f_s = 18,000$ $f_c = 1,000$
 $n = 10$

NOTE For Details of Piles and erection of Pile Bent Piers, see sheet "4."

[illegible]

Dimensions are to $\frac{1}{8}$ of bars

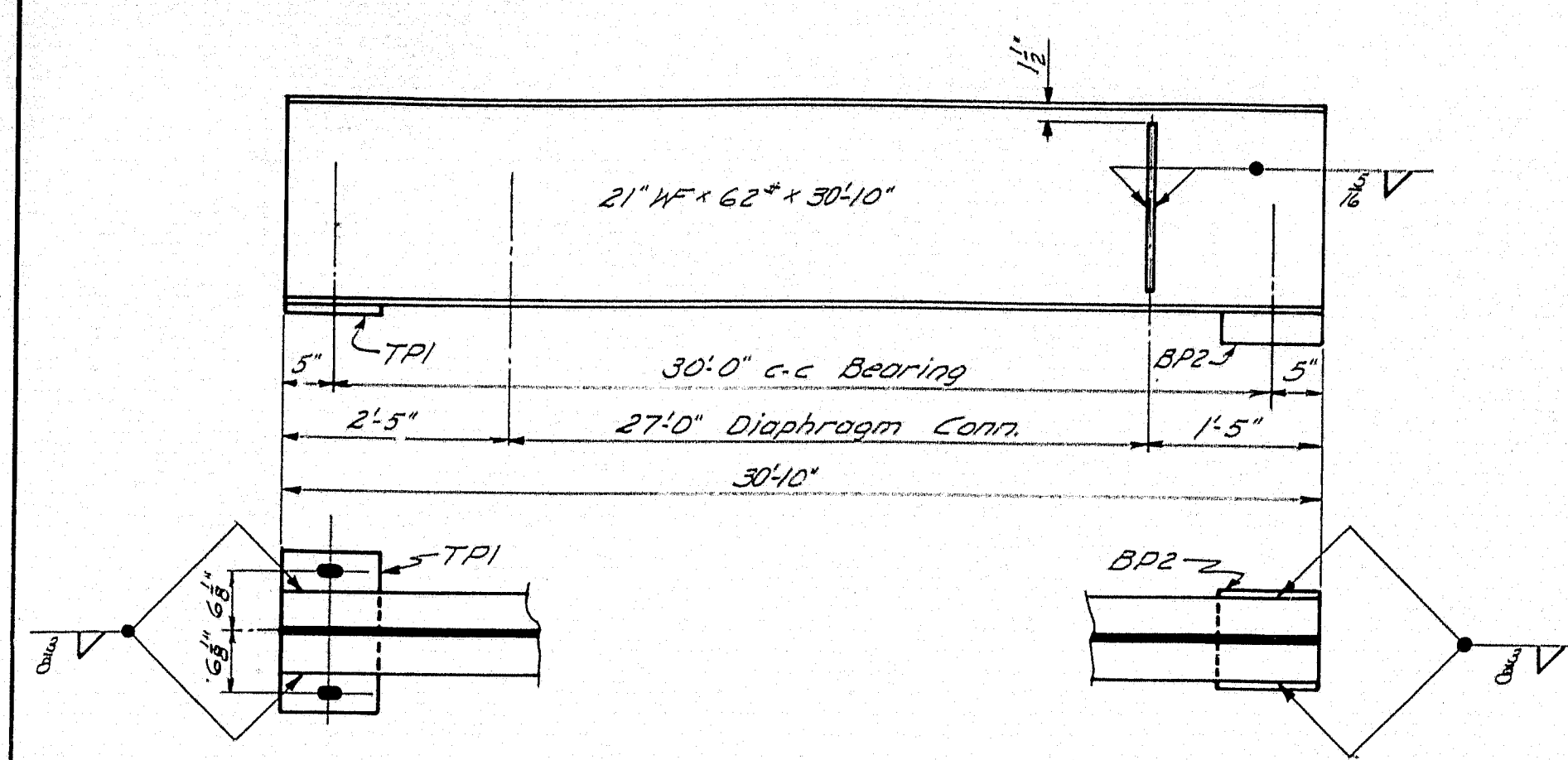
DESIGN - ALLEN	BRIDGE - 3956
TRACE - CLARK	
CHECK - <i>Hamilton</i>	

STATE HIGHWAY COMMISSION
BRIDGE DIVISION

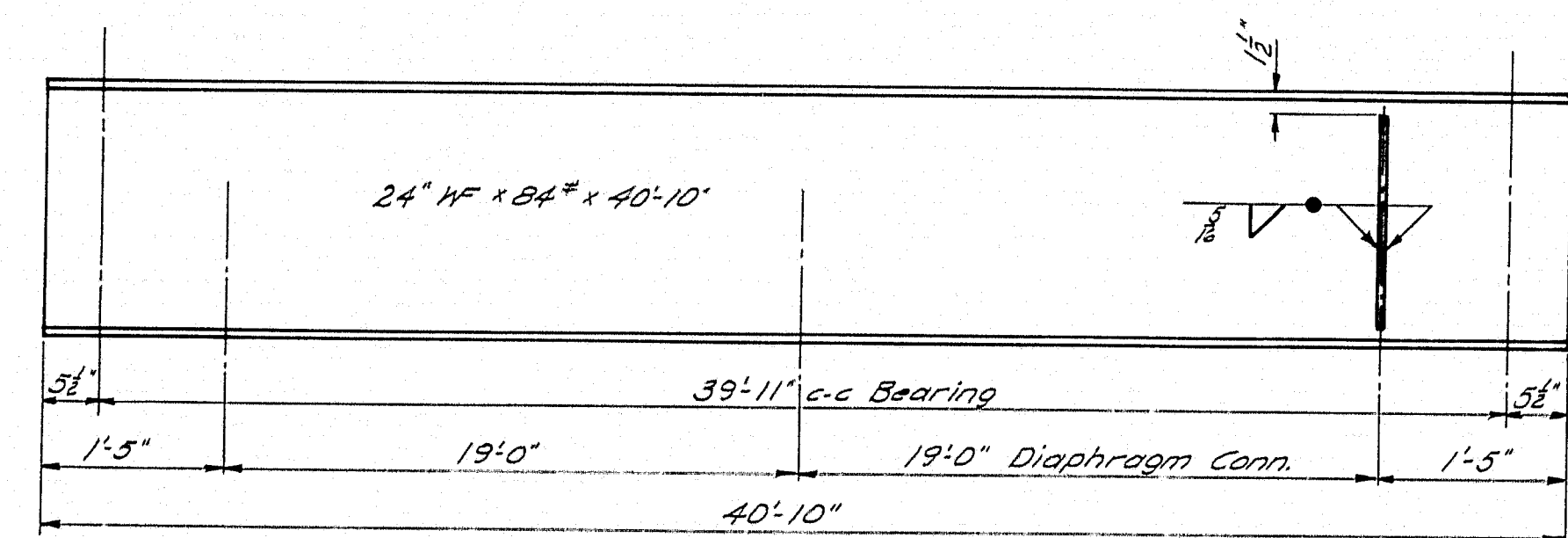
DRISKO BRIDGE
OVER
CHANDLER RIVER
IN THE TOWN OF
JONESBORO
WASHINGTON COUNTY

BRIDGE DETAILS

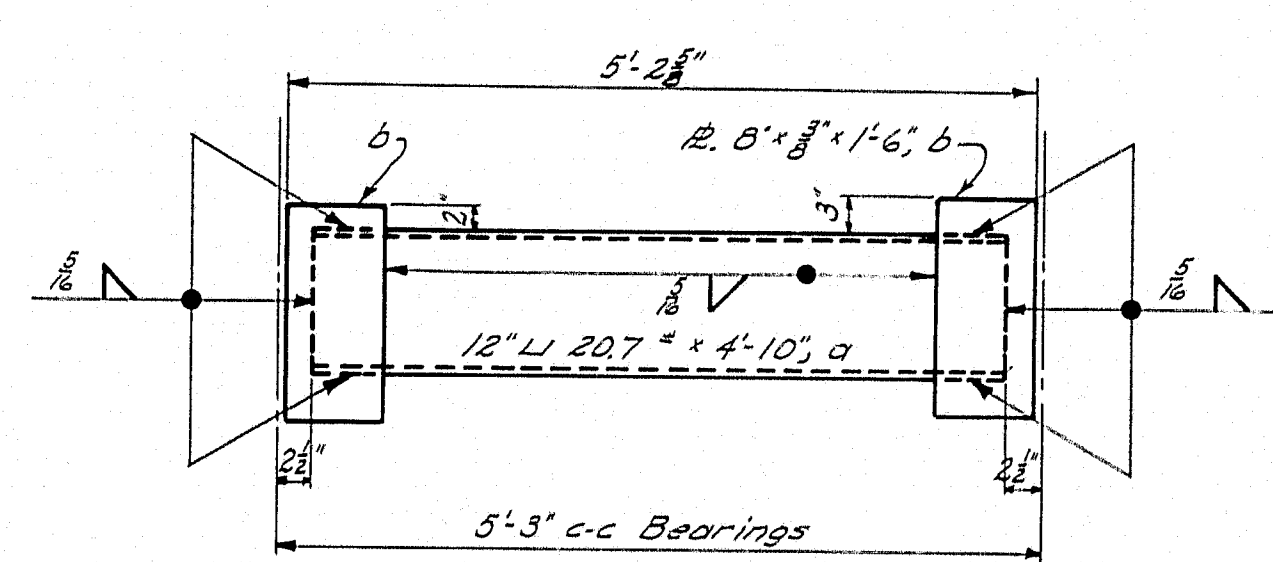
SHEET 3 OF 4 AUGUSTA, MAINE OCT. 1941



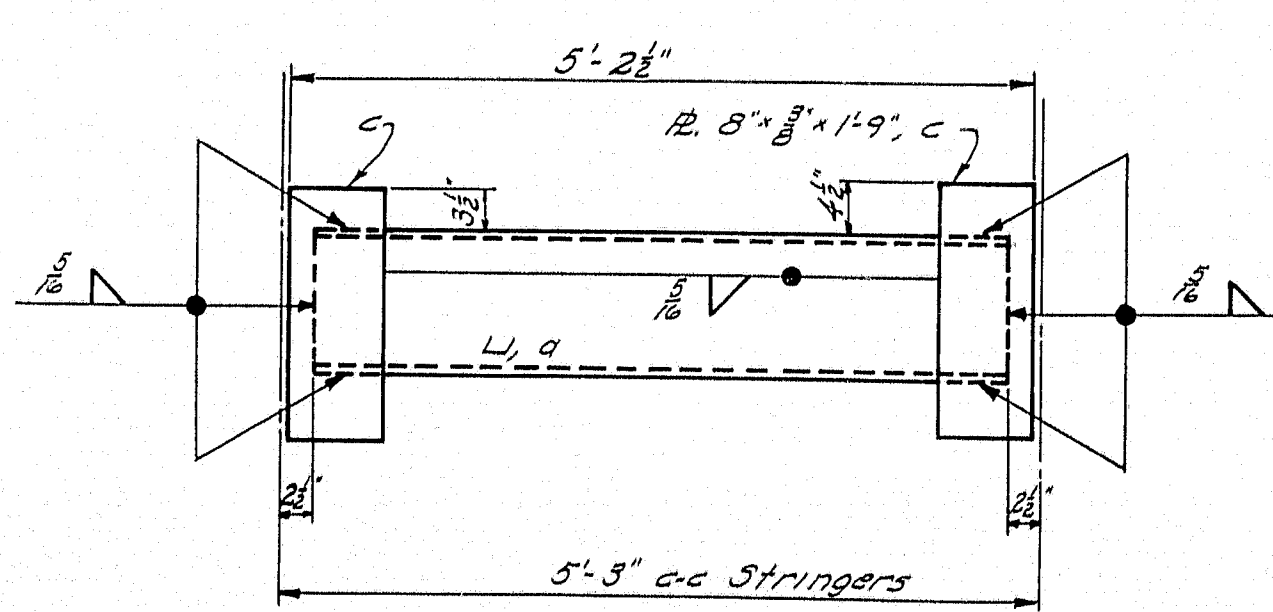
STRINGER-S1



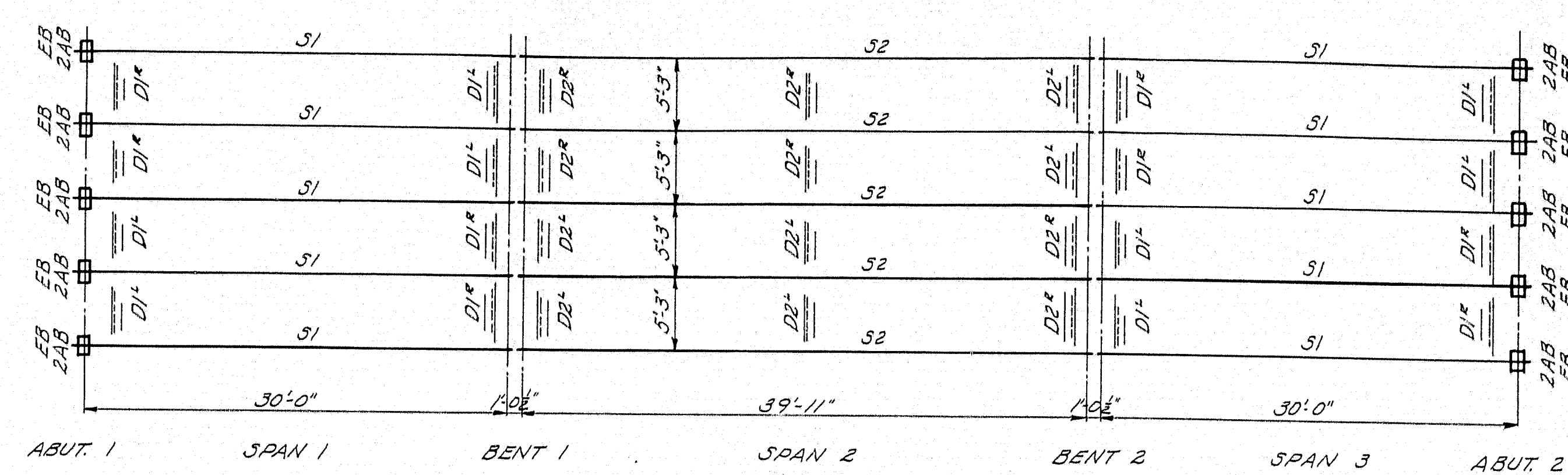
STRINGER-S2



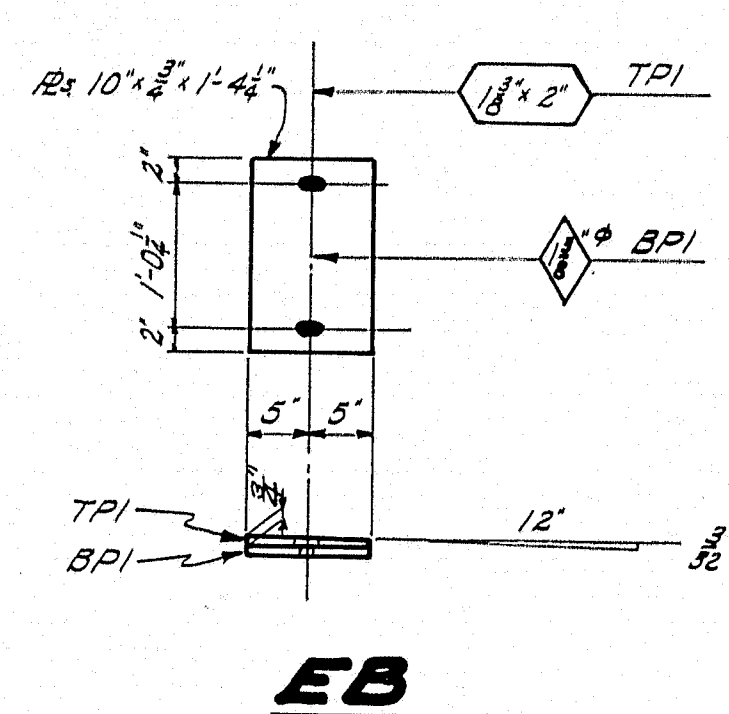
DIAPHRAGM-D1



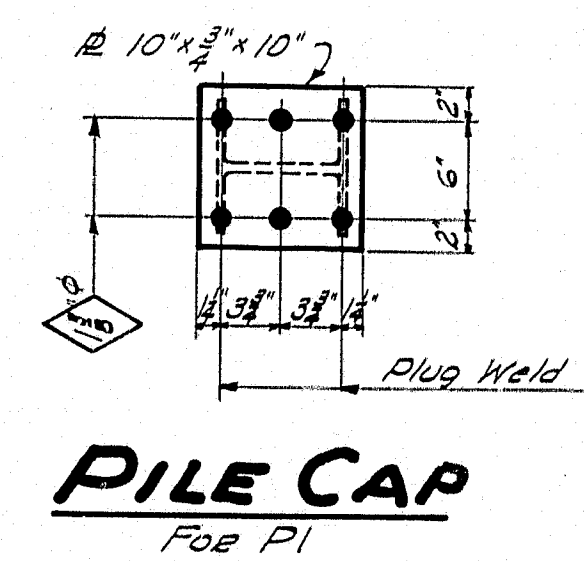
DIAPHRAGM-D2



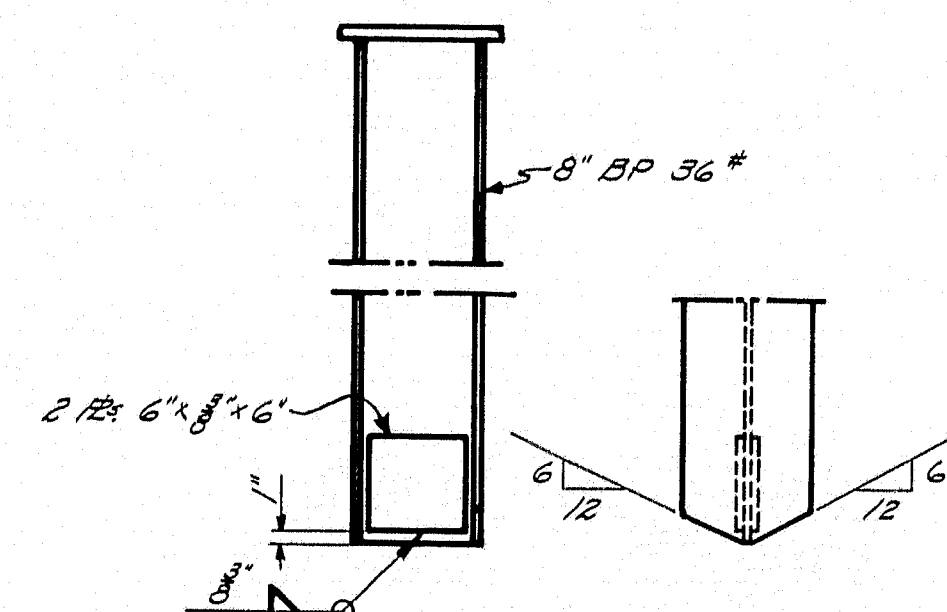
ERECTION DIAGRAM



EB

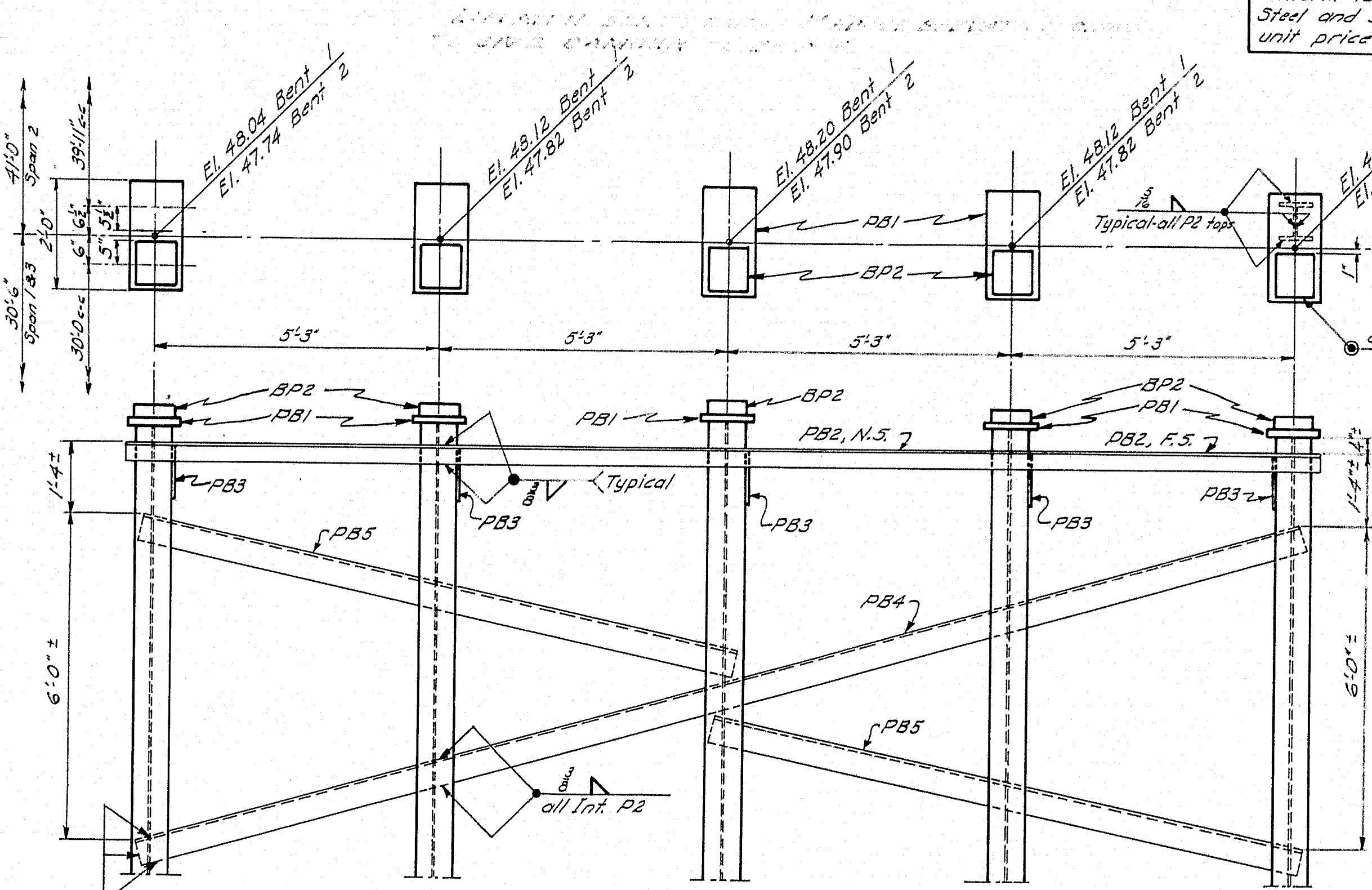


PILE CAP



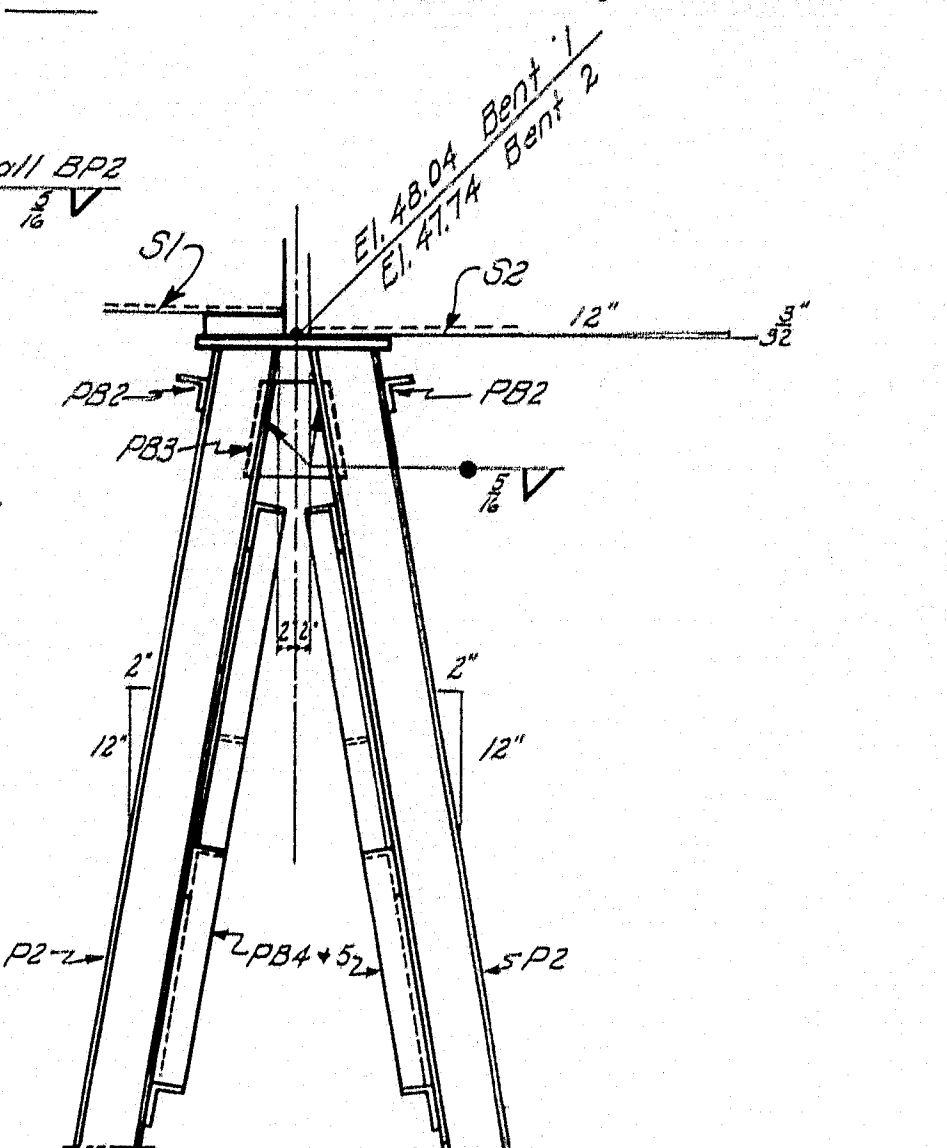
PILE POINT

Note: All material on this sheet except piles to be erected as structural steel and payment for erection will be under Item B7.

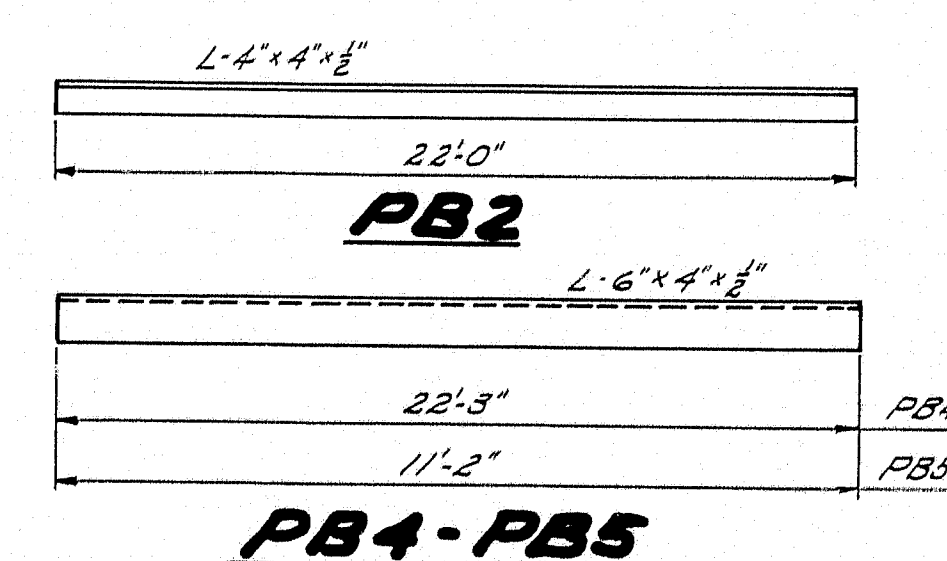


ERECTION BENT 1 & 2

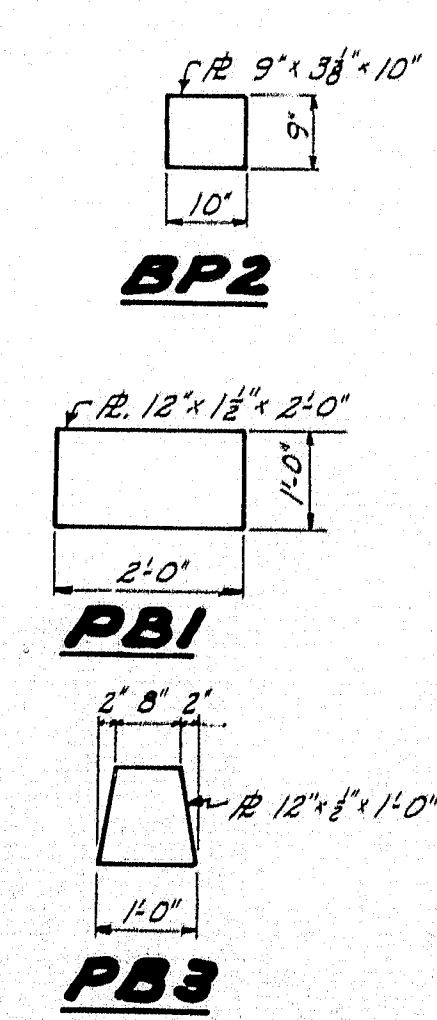
NOTE: Cut off tops of Piles P2 so that Plates PB1 may be set to elevations and grade shown.



END VIEW



ANCHOR BOLT-AB



SPECIFICATIONS
Maine State Highway Commission, Bridge Division, Specifications for Steel Highway Bridges, Nov. 1945.
Paint - One shop coat of red lead and oil, except contact surfaces.
Loading - H-15-44.

DESIGN - ALLEN
TRACE - CLARK
CHECK - Hamilton
BRIDGE - 3956
STATE HIGHWAY COMMISSION
BRIDGE DIVISION
DRISKO BRIDGE
OVER
CHANDLER RIVER
IN THE TOWN OF
JONESBORO
WASHINGTON COUNTY
STEEL DETAILS
SHEET 4 OF 4 AUGUSTA, MAINE OCT. 1947